

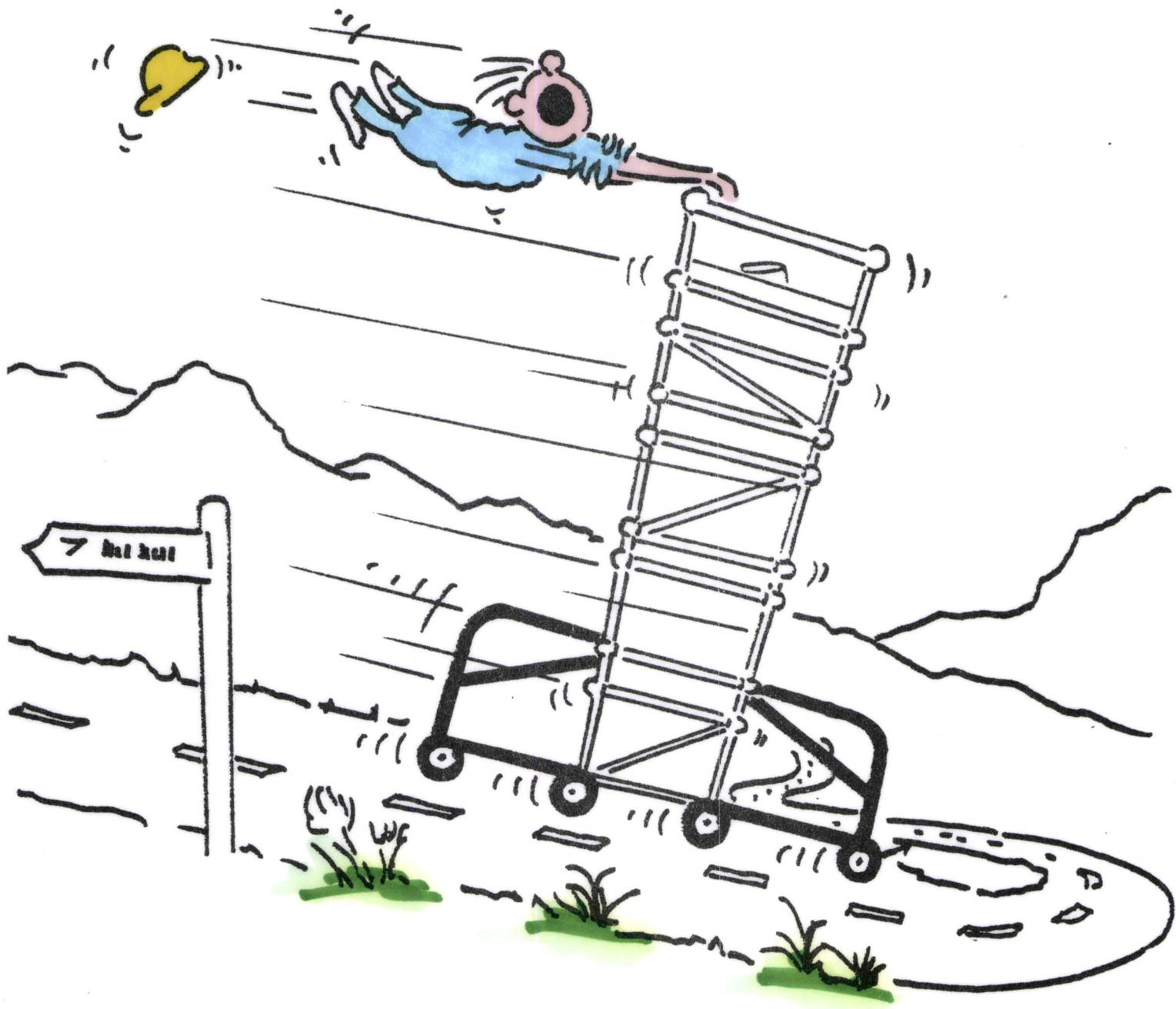
ITEM NO  
80.15



CHECK THAT ALL BASEPLATES OR CASTOR WHEELS ARE FULLY IN CONTACT WITH THE GROUND, INCLUDING THOSE ON STABILISERS OR OUTRIGGERS. ALL CASTORS SHOULD BE PROPERLY LOCKED.



BRACING MEMBERS SHOULD BE  
FITTED IN ACCORDANCE WITH  
SUPPLIER'S INSTRUCTIONS.



**ALL CASTORS  
SHOULD BE PROPERLY LOCKED!**



CHECK THAT THE TOWER IS SQUARE  
& VERTICAL & THAT THE HORIZONTAL  
BRACES & PLATFORMS ARE LEVEL.



INSPECT BEFORE EACH USE TO SEE  
THAT HEIGHT TO BASE RATIO IS WITHIN  
LIMITS. RAISE STABILISER FEET NOT  
MORE THAN  $\frac{1}{2}$ " ABOVE GROUND WHEN  
MOVING.



**CHECK THAT ALL COMPONENTS ARE  
OF THE SAME MAKE AND CORRECT TYPE  
AND THAT THE CORRECT NUMBER  
ARE ON SITE.**

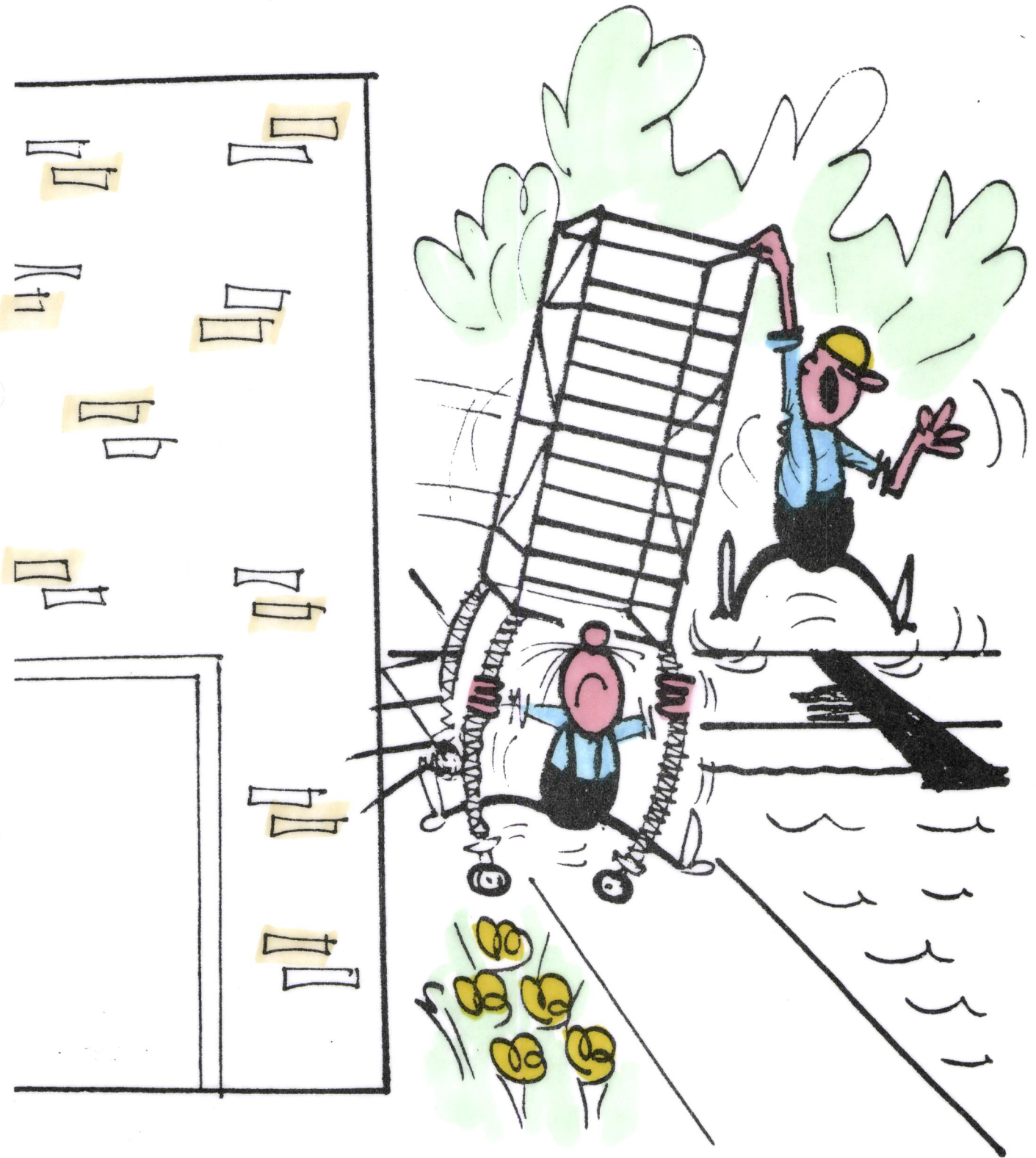


AVOID USING THE TOWERS IN HIGH WINDS OR SEVERE WEATHER. PASMA SCAFFOLDS ARE SAFE TO BE USED IN WINDS UP TO BEAUFORT SCALE 4.



NEVER USE A LADDER EXTERNALLY, AND WHEN USED INTERNALLY ALWAYS ENSURE THAT THE LADDER DOES NOT REST ON THE GROUND.

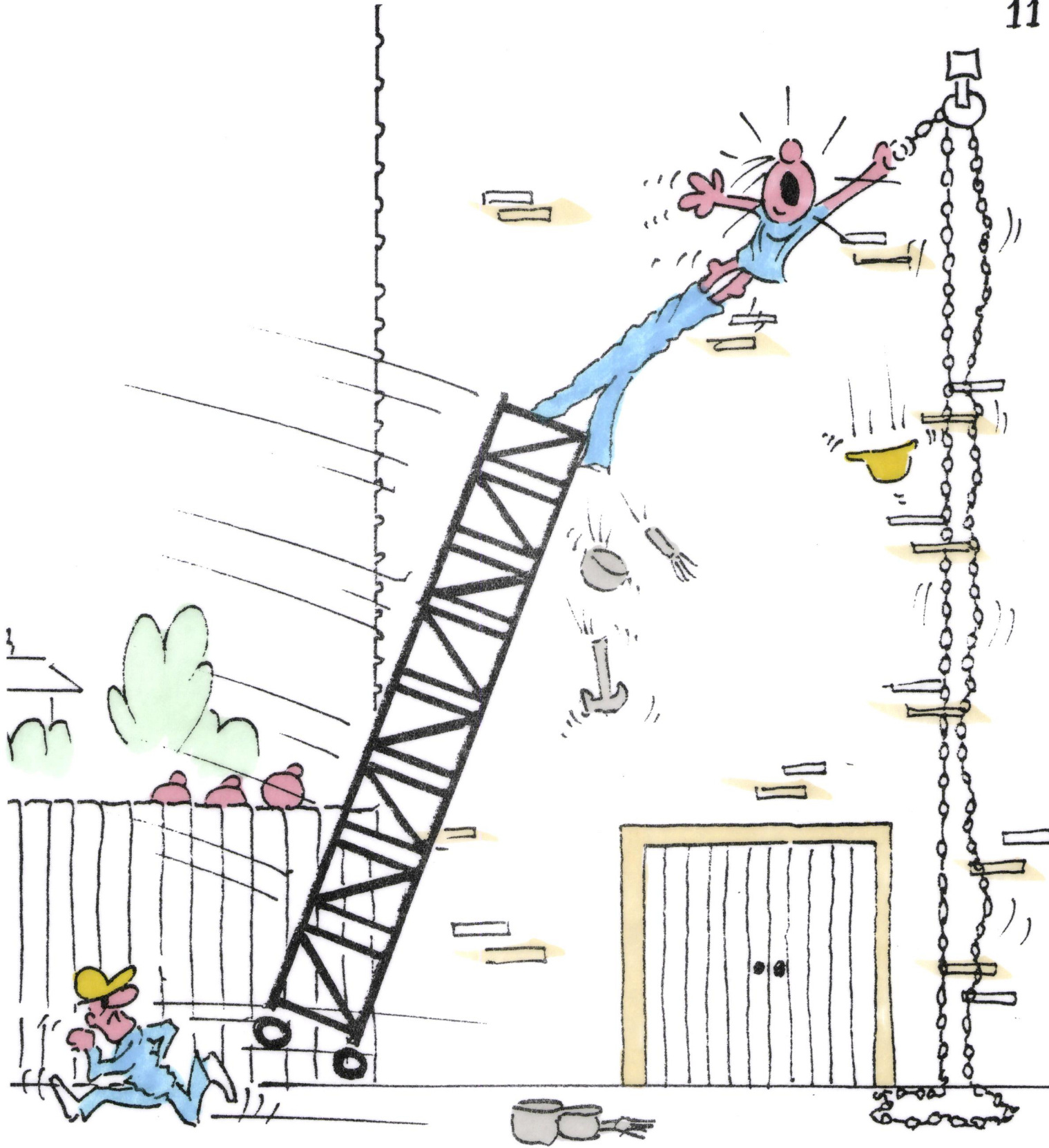




ADJUSTABLE LEGS MUST NOT  
BE USED AS A MEANS OF  
GAINING ADDITIONAL HEIGHT!

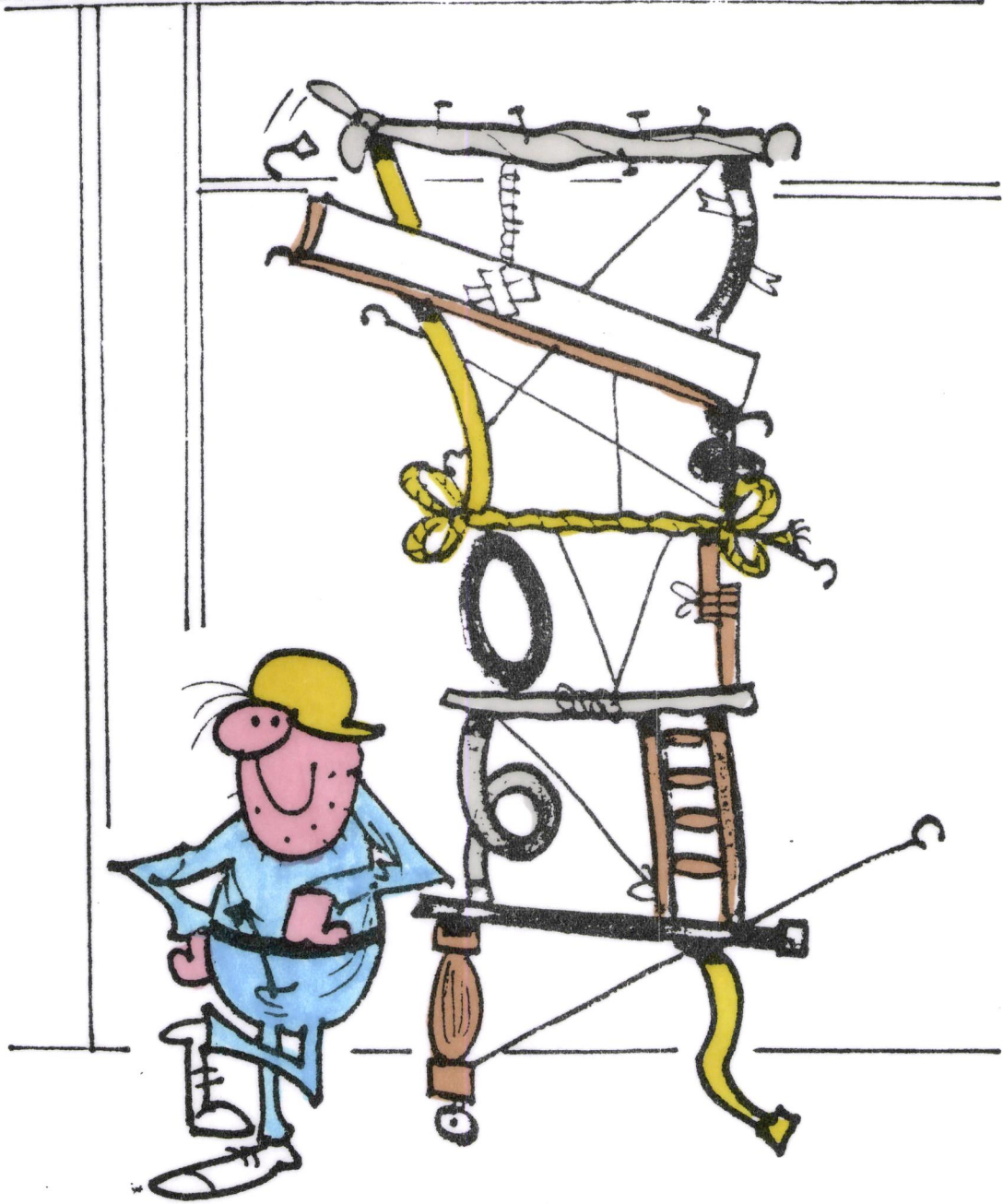


INSURE REASONABLE PRECAUTIONS ARE  
TAKEN TO PREVENT COLLISION WITH  
TOWER BY PERSONS OR VEHICLES!

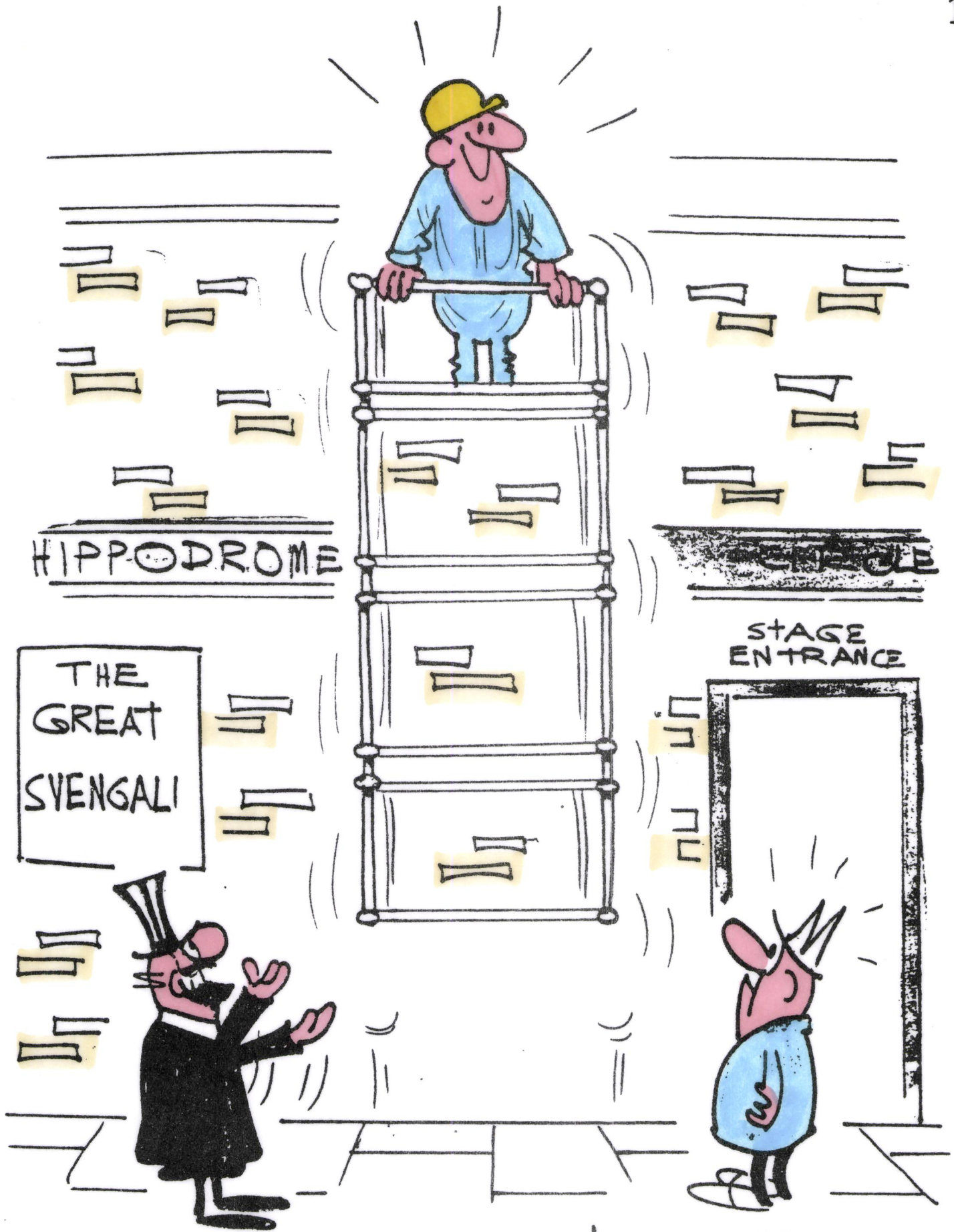


**DO NOT MOVE BY PULLING  
AT WORK PLATFORM LEVEL!**

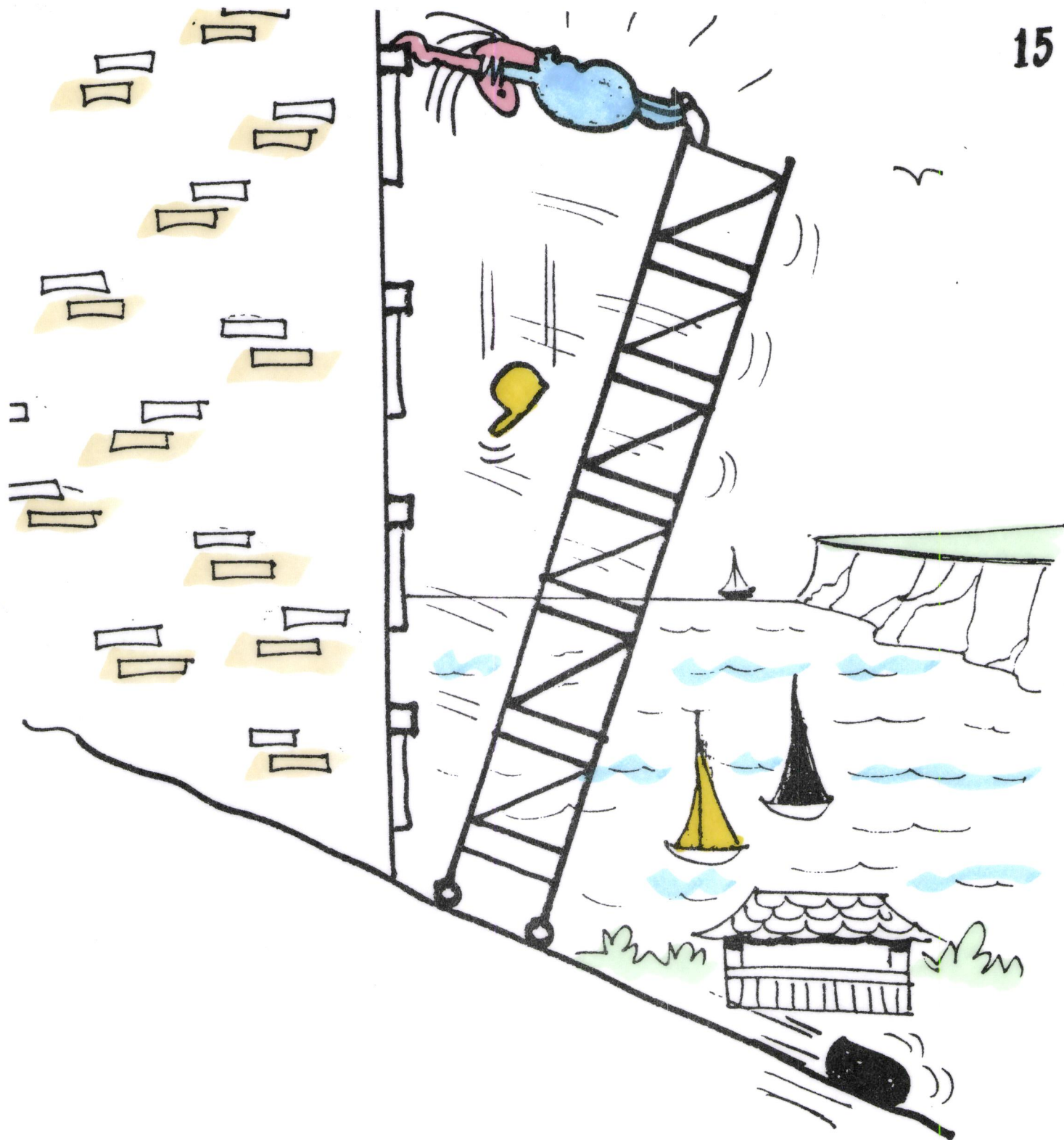
# JOE BLOGGS



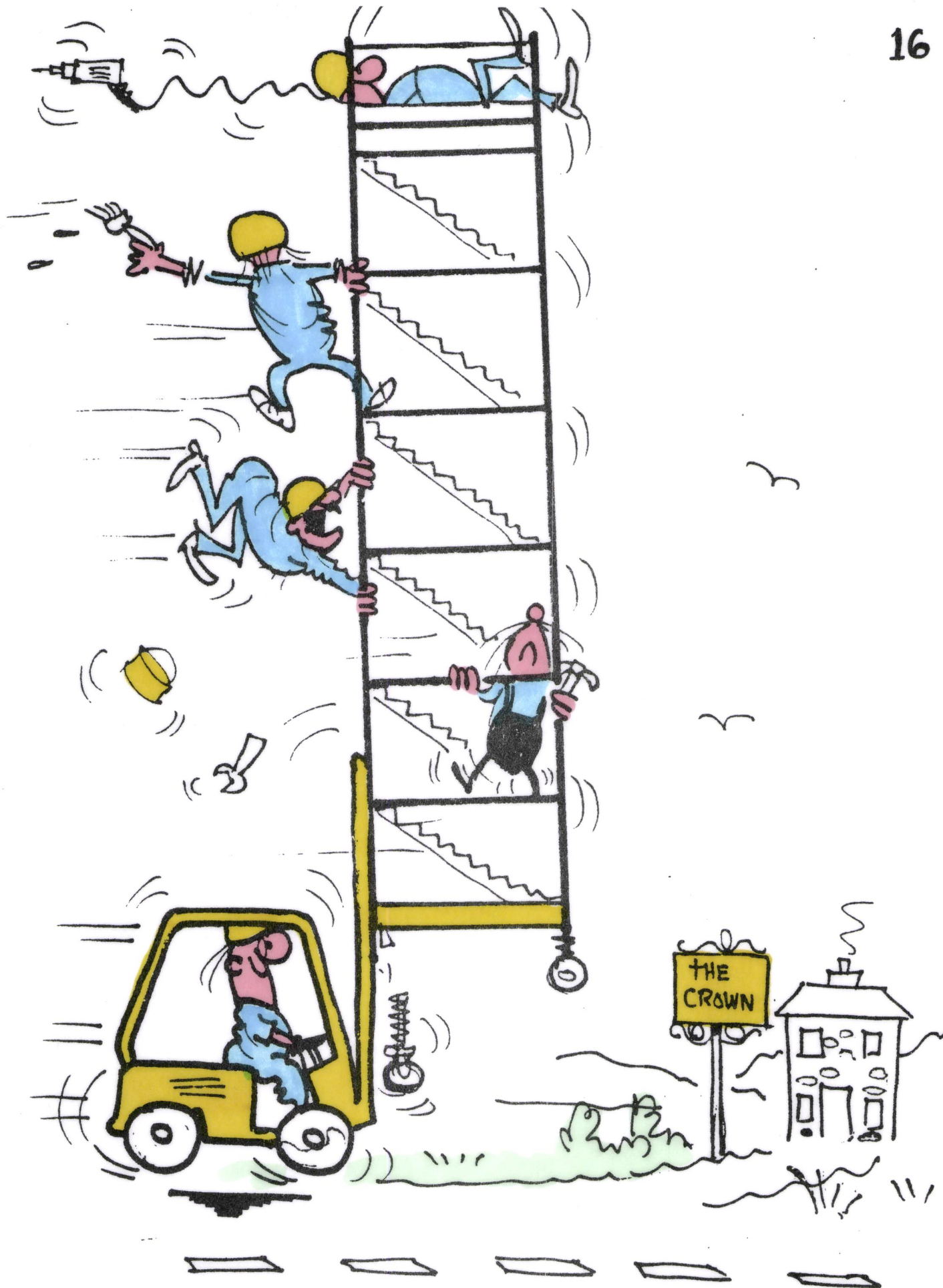
REPAIRS SHOULD ONLY BE  
CARRIED OUT BY THE SUPPLIER  
OR OTHER COMPETENT PERSON!



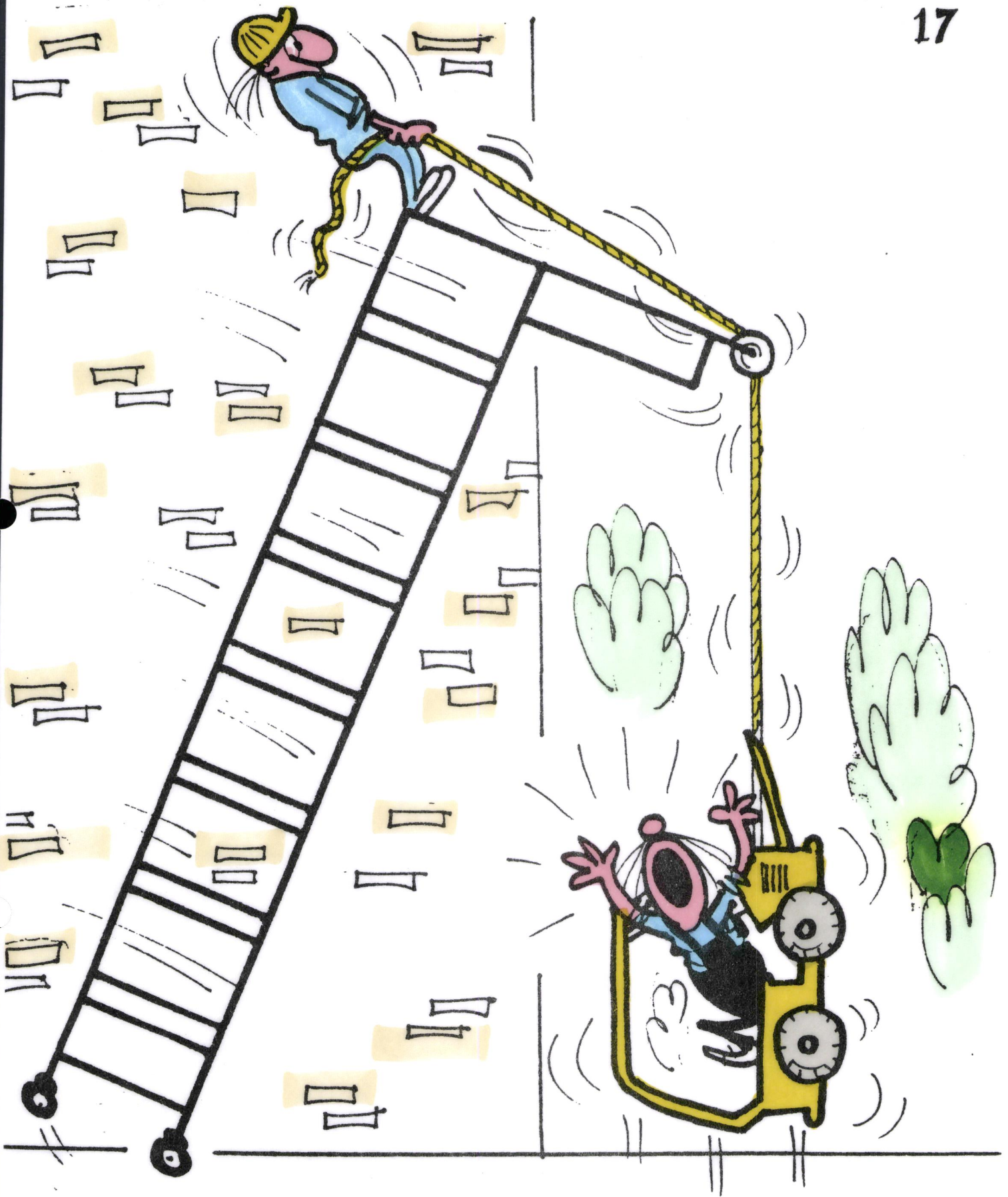
ADHERE RIGIDLY TO SUPPLIERS  
 INSTRUCTION MANUAL SEQUENCE  
 OF ERECTION!



TOWER MUST NOT BE USED  
ON SLOPING SURFACE WITHOUT  
ATTENTION TO VERTICAL  
ALIGNMENT AND STABILITY.

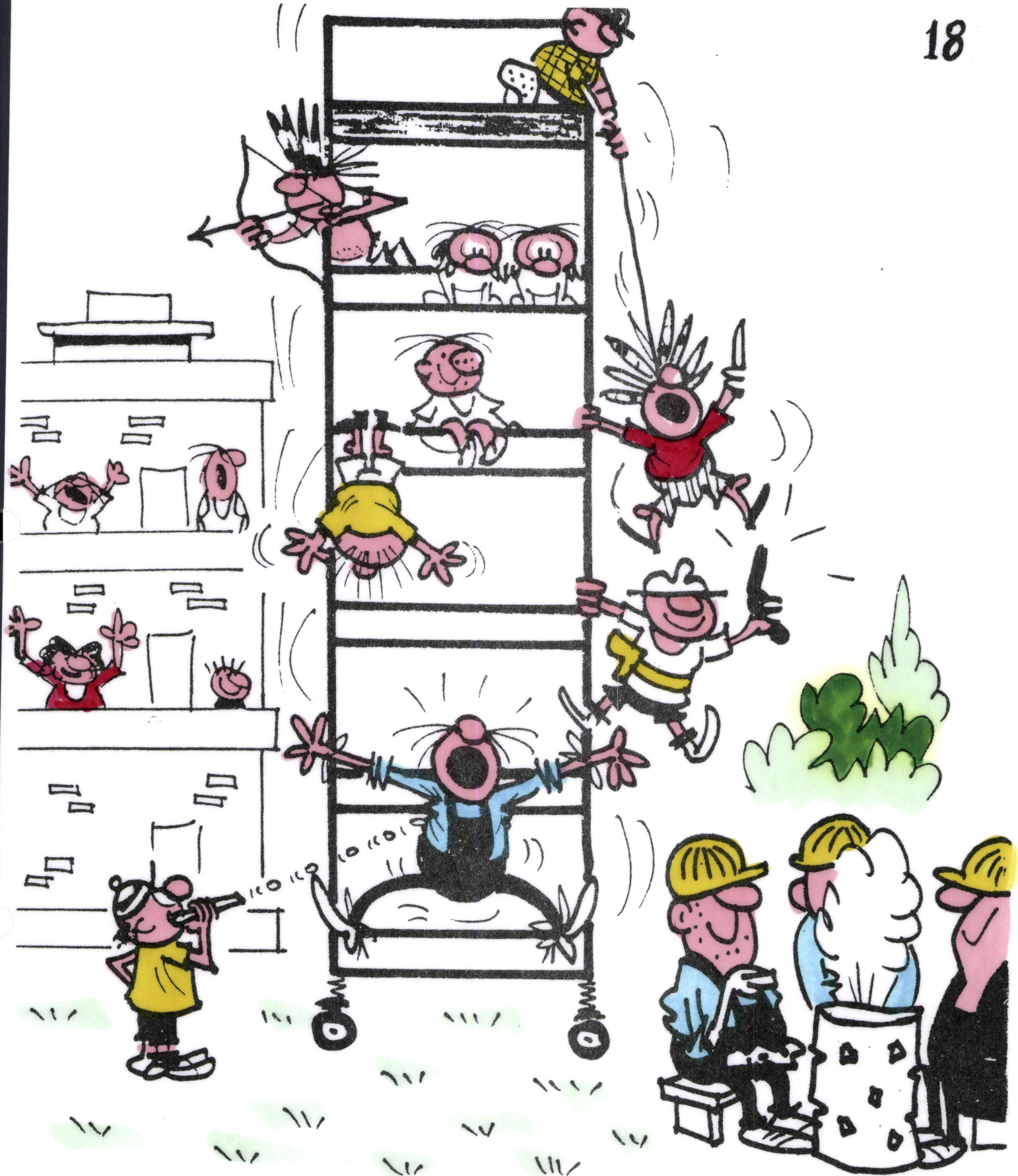


**ENSURE THAT MEN AND MATERIALS ARE OFF THE TOWER WHEN MOVING. NEVER MOVE THE TOWER WITH FORK LIFT TRUCK**

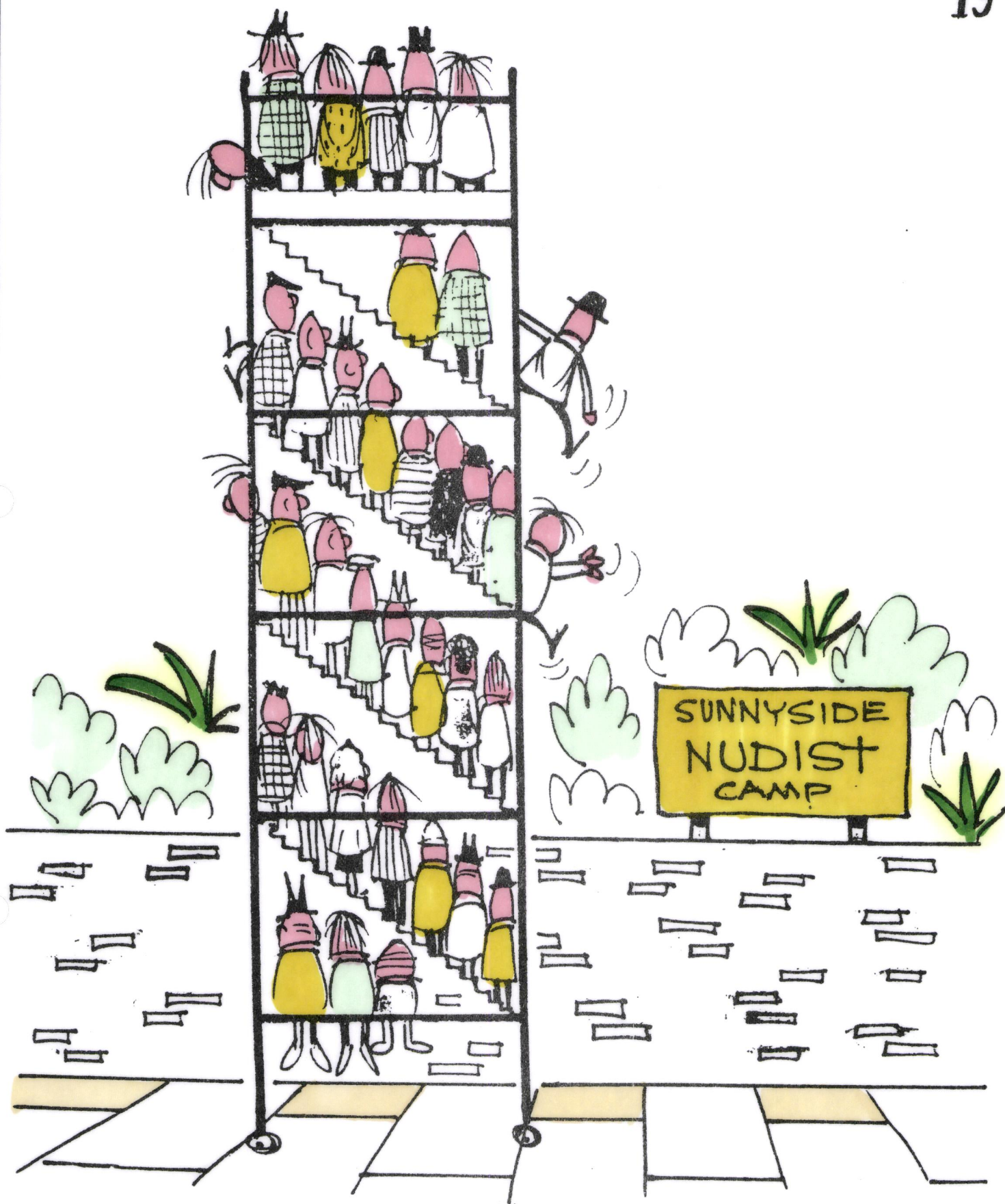


IF POSSIBLE HOIST ANY LOADS  
INSIDE THE TOWER, WHEN RAISING  
LOADS OUTSIDE THE TOWER  
STABILITY IS REDUCED.





IN INDUSTRIAL AREAS, HOUSING ESTATES, PUBLIC PLACES ETC., TAKE ALL NECESSARY PRECAUTIONS LIKE FENCING THE BASE OF THE TOWER TO PREVENT CHILDREN OR VANDALS FROM CLIMBING THE TOWER.



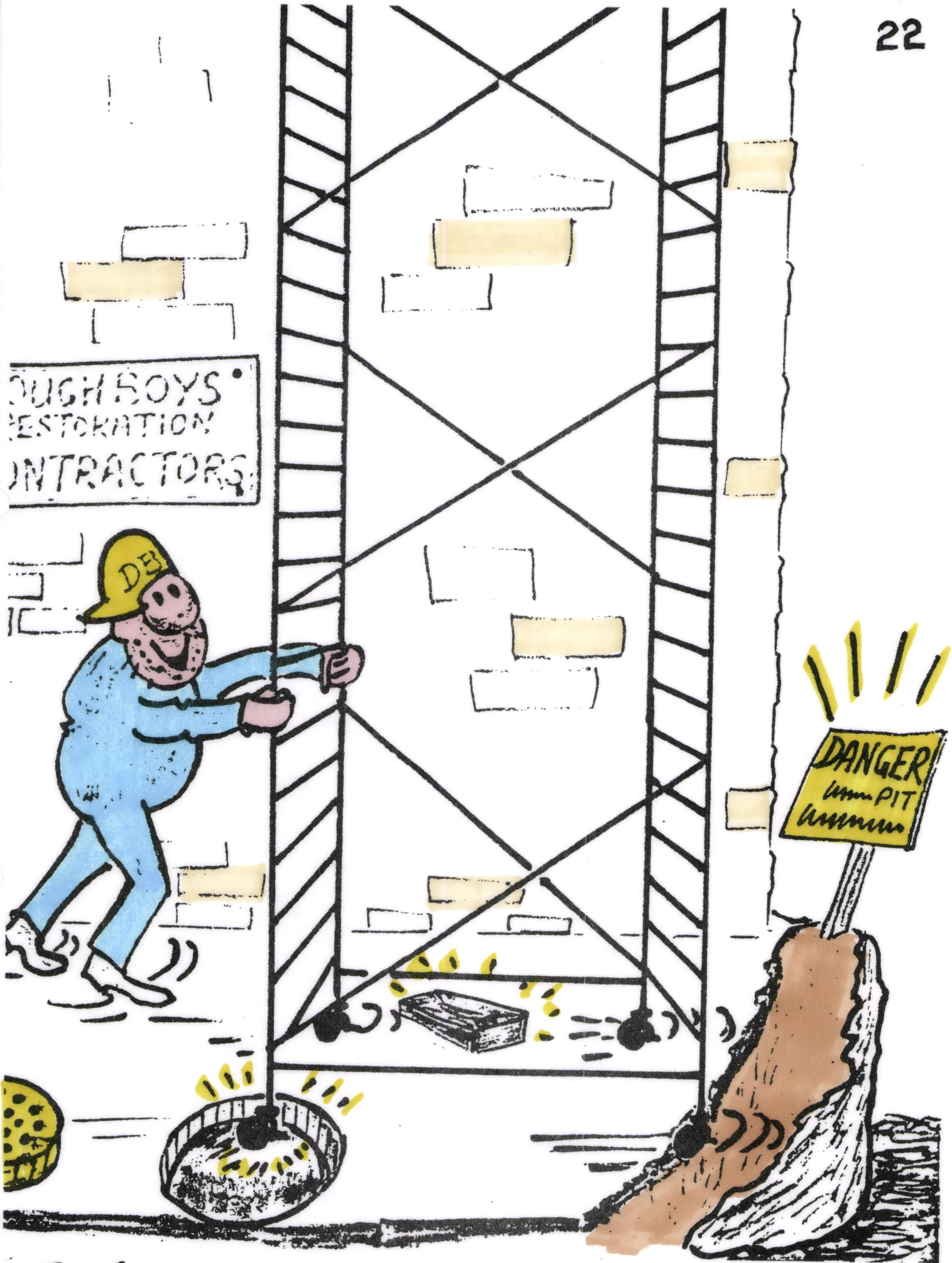
INSURE S.W.L. OF TOWER  
IS NOT EXCEEDED.



**AVOID MOVING THE TOWER BY  
MECHANICAL MEANS SUCH AS  
TOWING WITH A VEHICLE**



TAKE CARE THAT THE TOWER DOES NOT FOUL OVERHEAD ELECTRIC CABLES

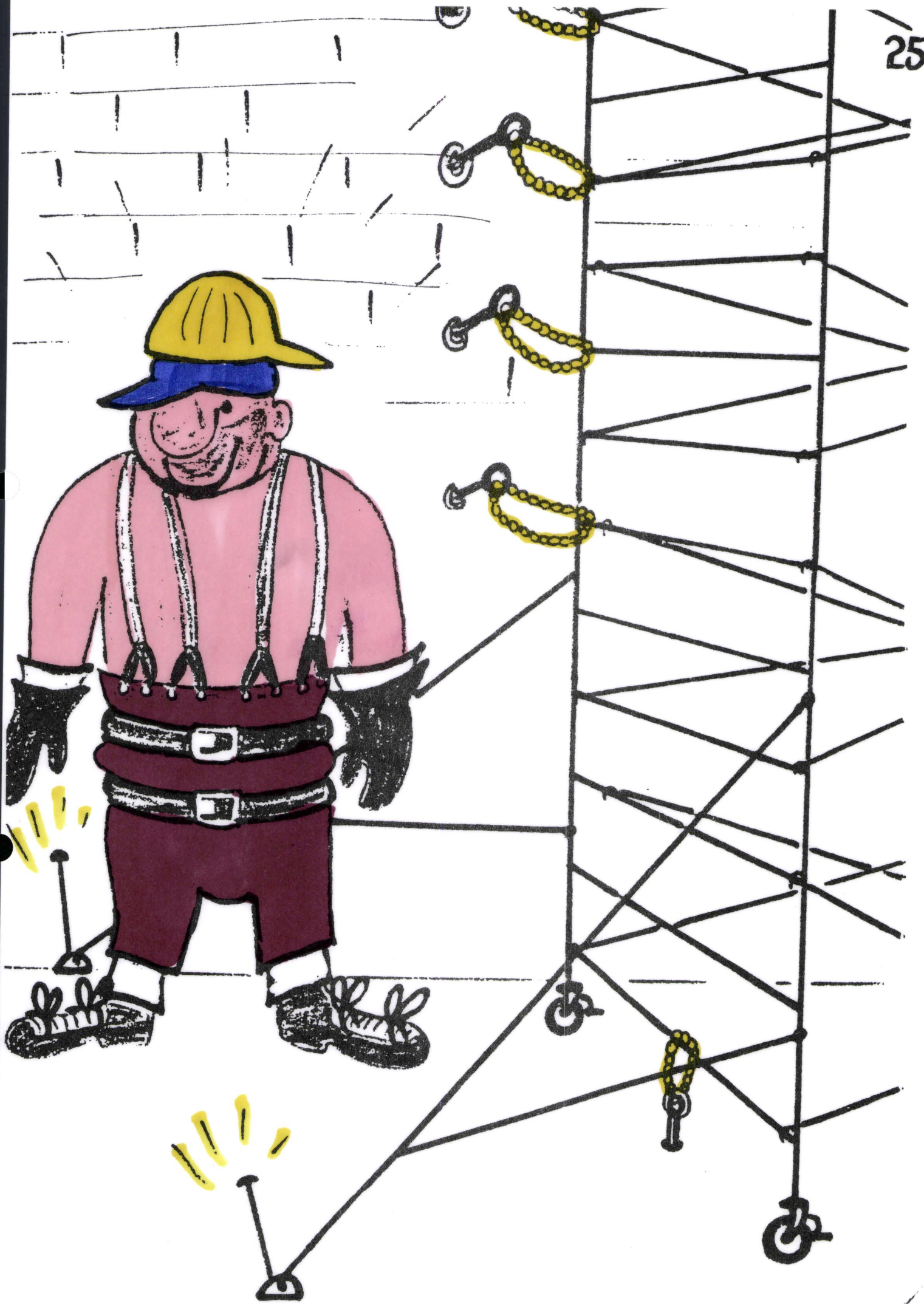


ENSURE ANY HOLES, DUCTS, PITS OR GRATINGS ARE SECURELY COVERED

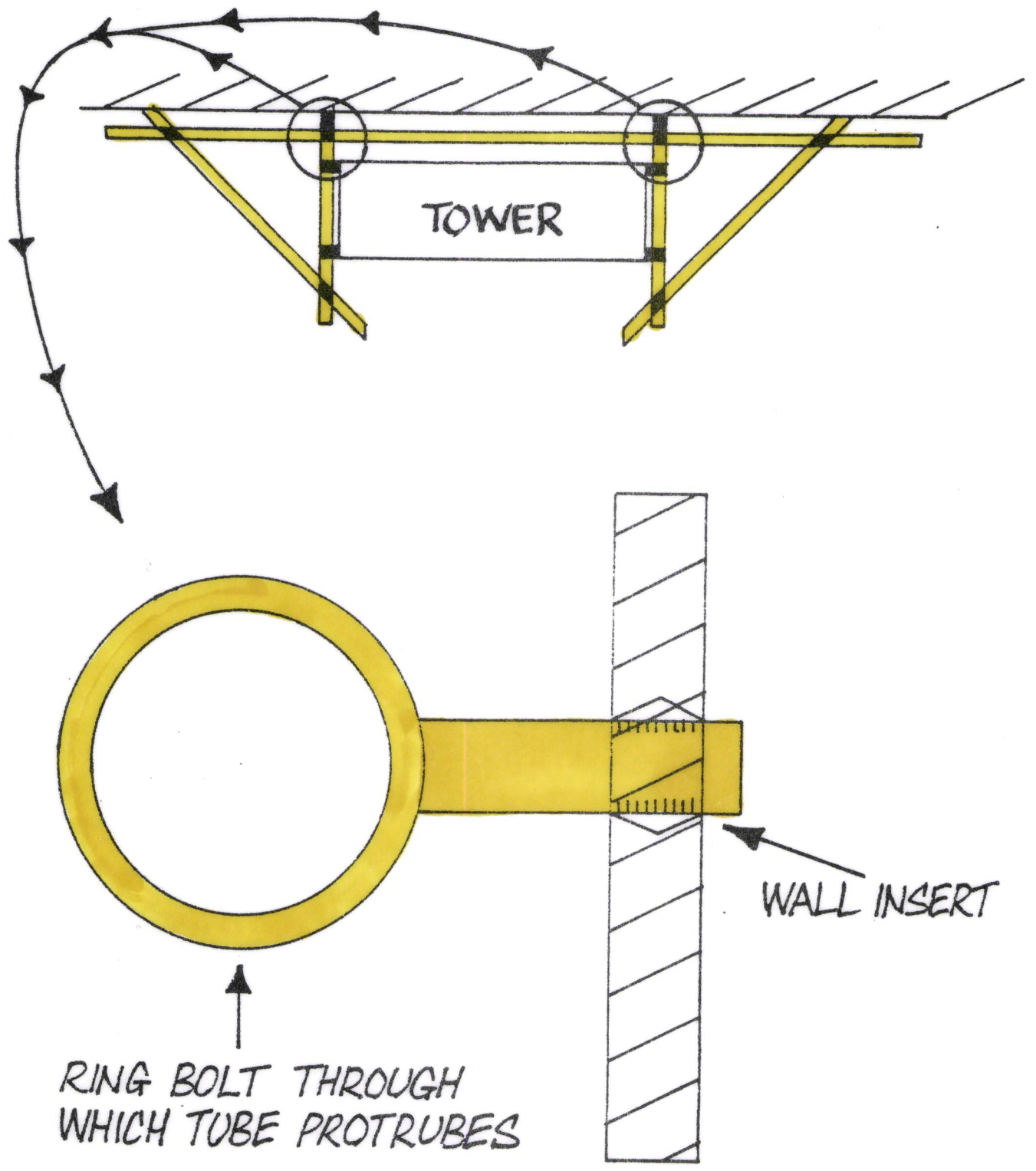


TOWERS CAN BE BUILT WITH CANTILEVER PLATFORMS TO CLEAR OBSTRUCTIONS. SUCH TOWERS HAVE TO BE CAREFULLY ERECTED IN ACCORDANCE WITH THE DESIGN APPROVED BY THE SUPPLIER.

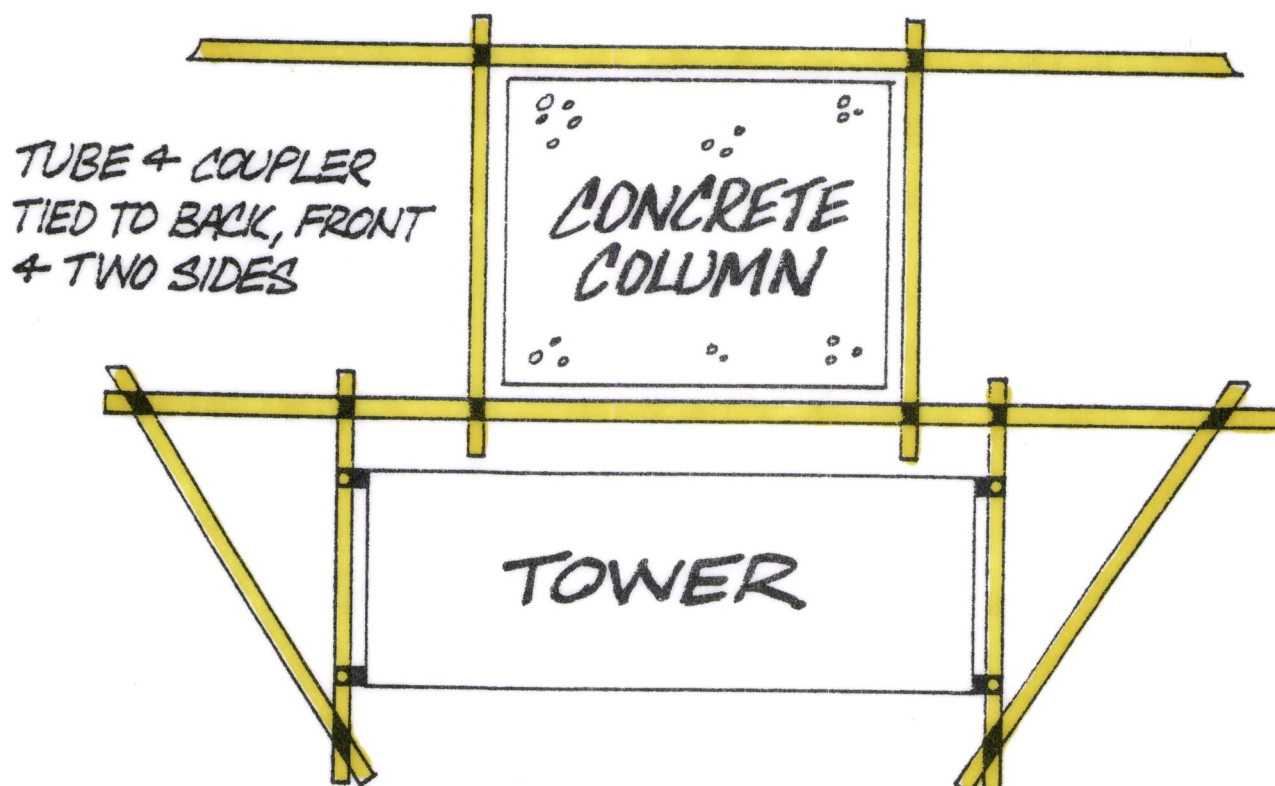




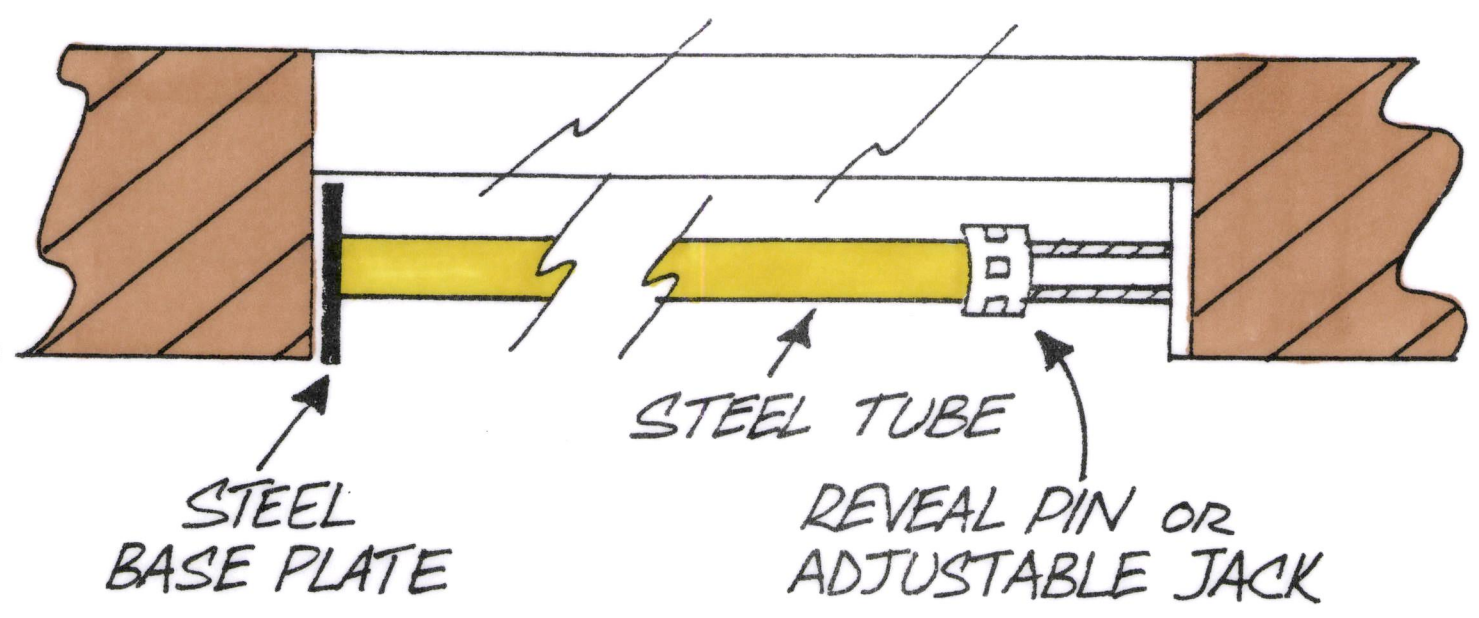
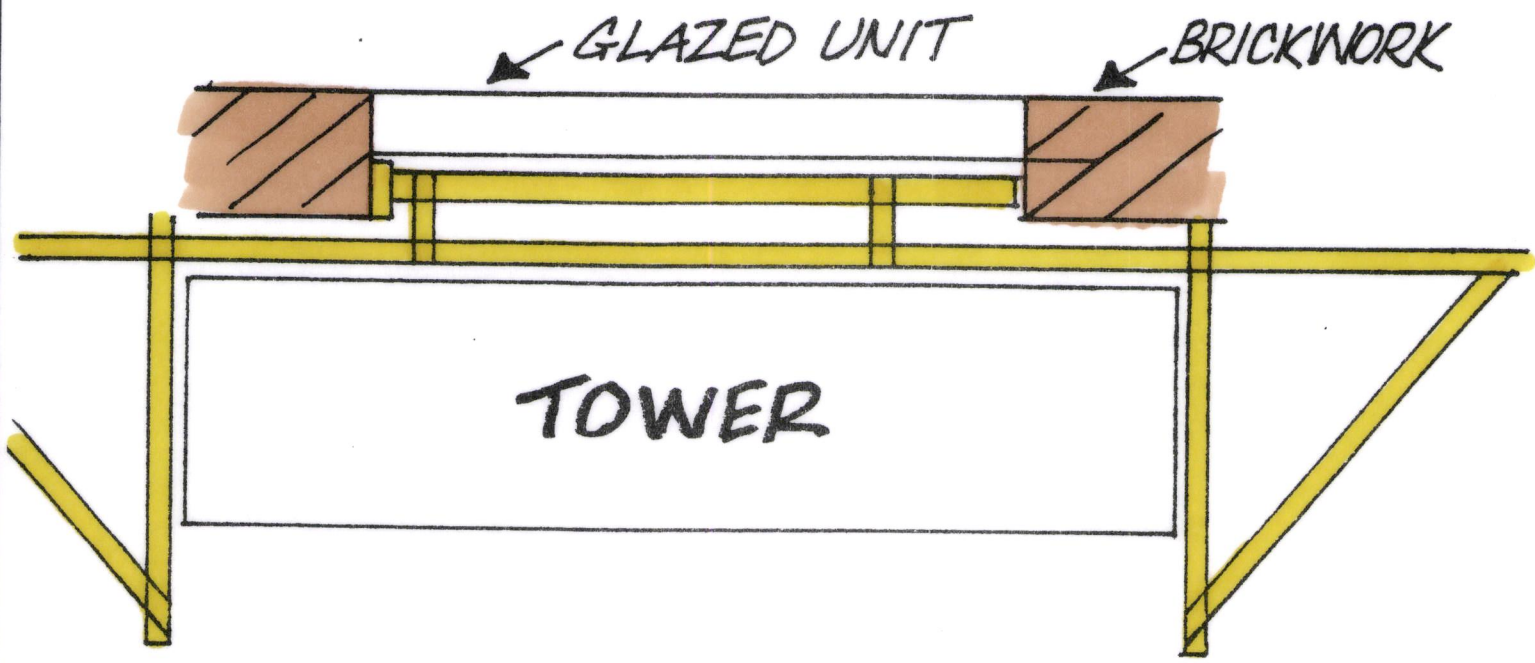




# ANCHOR TIE



BOX TIE



# REVEAL TIE

OPENING

COUPLER

TUBE

OPENING

COUPLER

TUBE

# THRU TIE

